

Das Arboretum-Projekt - ein Beitrag zur nachhaltigen Nutzung natürlicher Ressourcen -



ex-situ (off-site)

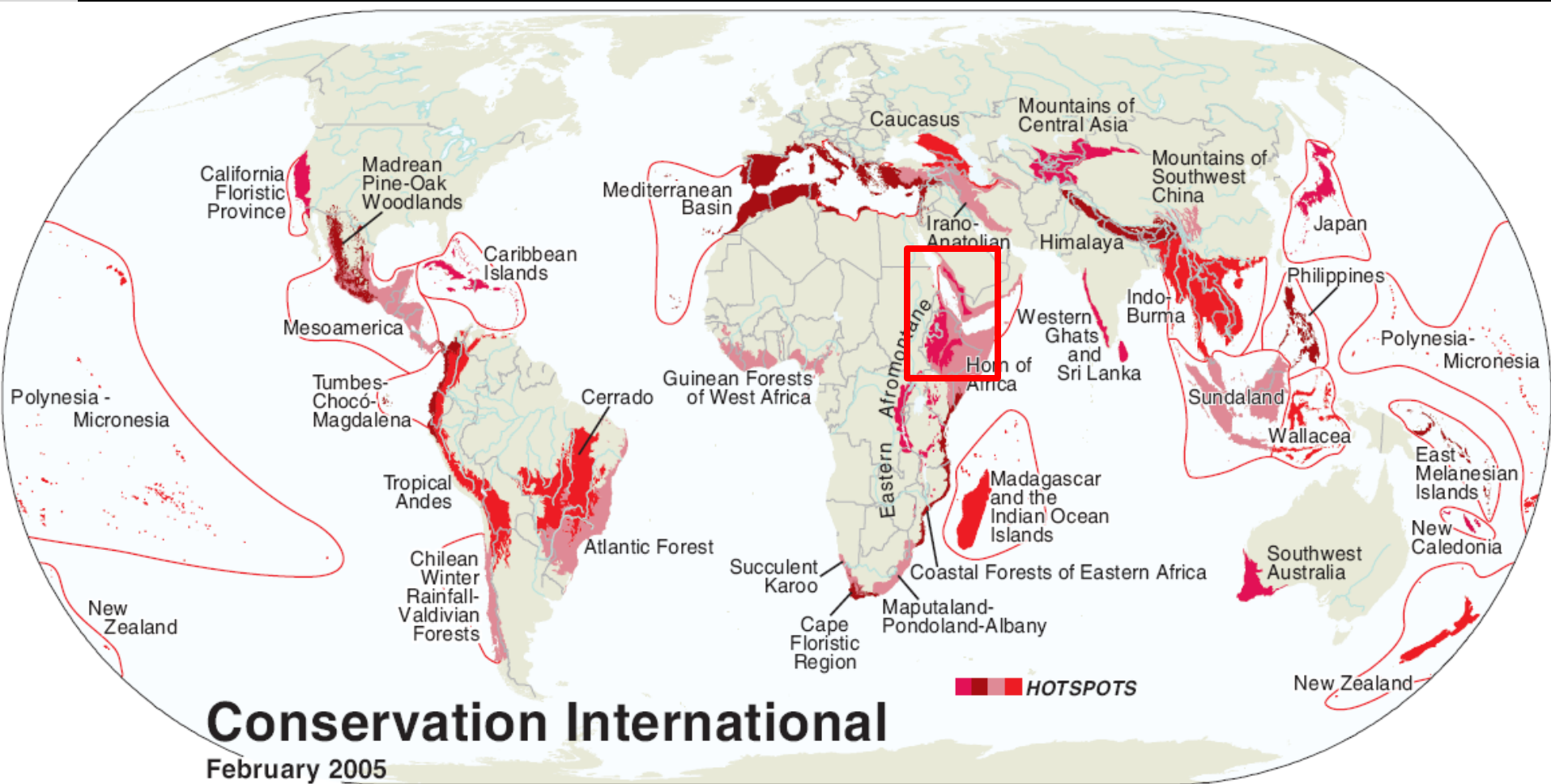
ex-situ conservation –
supporting species survival in the wild

The Convention on Biological Diversity (CBD)
provides a major opportunity
for *ex-situ* facilities (article 9) to establish
themselves as valued resources (BGCI 2001).

CBD – Recommendations on Species-Level Conservation (Glowka et al. 1994)

- (a) ...*ex-situ* conservation preferably in the country of origin
- (b) ...maintain facilities and research preferably in the country of origin
- (c) ...measures for the recovery of threatened species
- (d) ...collect but don't threat ecosystems and *in-situ* populations

Global Biodiversity Hotspots

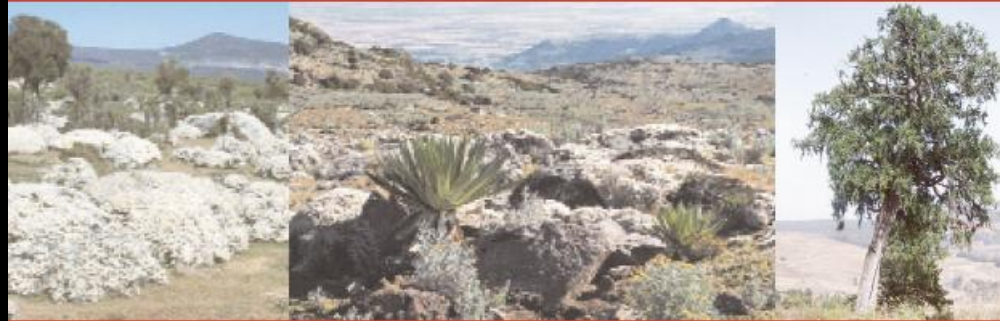


INTRODUCTION

Ethiopia & Eritrea

- low forest cover, but high diversity of shrub and tree species
- adversely affected by high human and climatic impact
- Land-use and frequently occurring droughts - reinforced by climate change - result in a constant loss of forest habitats and species
- >90% of the total energy used in Ethiopia comes from biomass (fuelwood)
- >1.000 indigenous tree species are potentially endangered
- 1997 IUCN Red List: 48 species
- 2008 IUCN/FFI: 135 species
 - ex-situ* collections in Botanical Gardens and Arboreta can be considered a critical tool to ensure the existence of these species in future

The Red List of Endemic Trees & Shrubs of Ethiopia and Eritrea



Jose Luis Vivero, Ensermu Kelbessa
and Sebsebe Demissew

Junge Wegweiser...

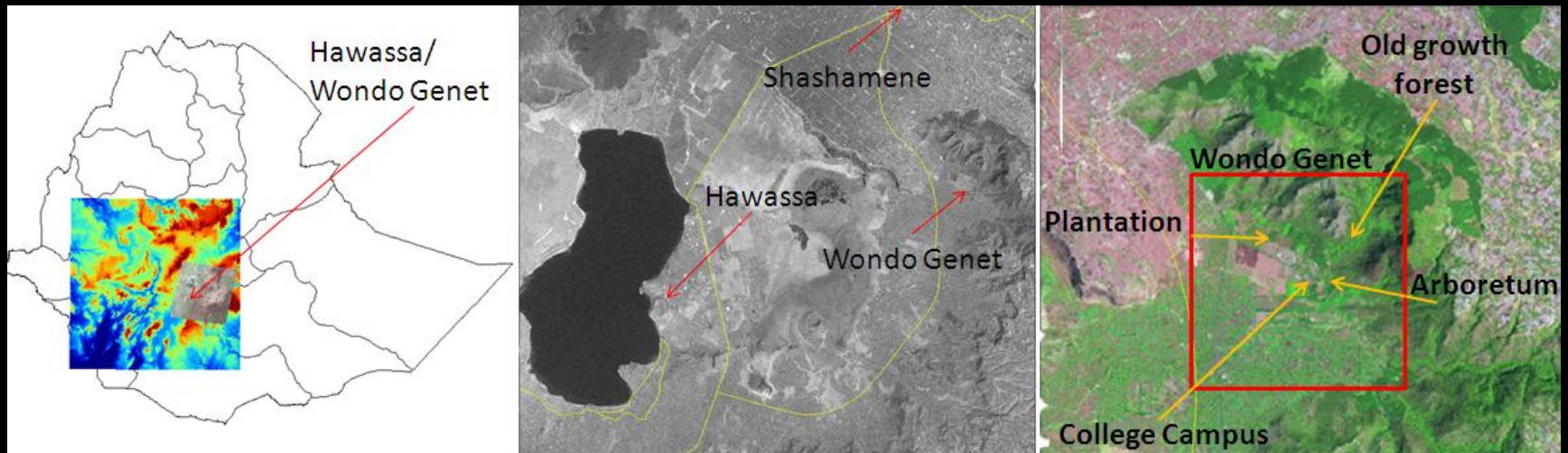


The Wondo Genet College Arboretum Project

- ARBOPRO -



The Location of the Arboretum



Wondo Genet College



Wondo Genet College Arboretum

established in 1978

3 ha

Includes more than 100
species.

1.890 m a.s.l.

19° C

1.100 mm

Wondo Genet College Arboretum

**...since more than
10 years**

**it is not maintained anymore
and out of use.**

The objectives of the Arboretum

1. Reference

2. Research & Education

3. *Ex-situ* plant conservation

First steps

1. Database

2. Check

3. Workshops

Checking labels...

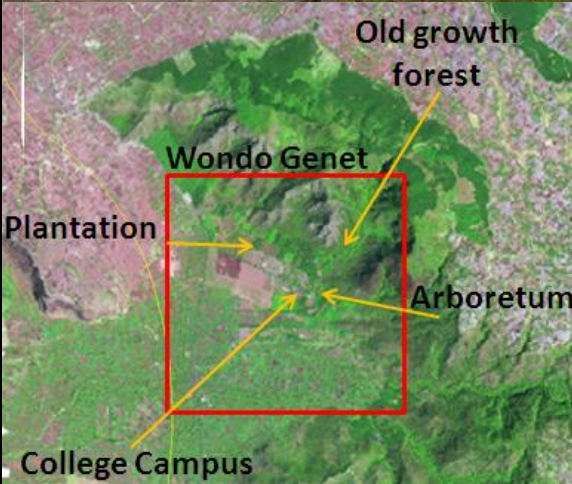


The purpose of ARBOPRO

1. foster the exchange between scientists on biodiversity and conservation in order to support the WGC staff to maintain and enhance the collection of the Arboretum.
2. establish exchange between botanical gardens and herbaria in Africa and Europe.
3. enable the WGC Arboretum to act as a platform for future joint research on tree species in the challenging climate of East Africa.

**Our main scientific goal
is the establishment
of a well-maintained,
scientifically effective
Arboretum
at the Wondo Genet College.**

Campus, Arboretum, Forest!



Big trees for the future!



- **Restoration of the Arboretum of the Wondo Genet College**
- **Expansion of the Arboretum**
- **Collaborative research in biodiversity, plant ecology and conservation of plants**
- **Capacity building**

Anschubfinanzierung durch das Kompetenzzentrum Nachhaltige Universität der Universität Hamburg

Zukünftige Projektplanung mit folgenden Partnern:

